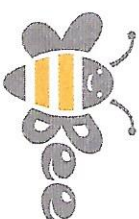
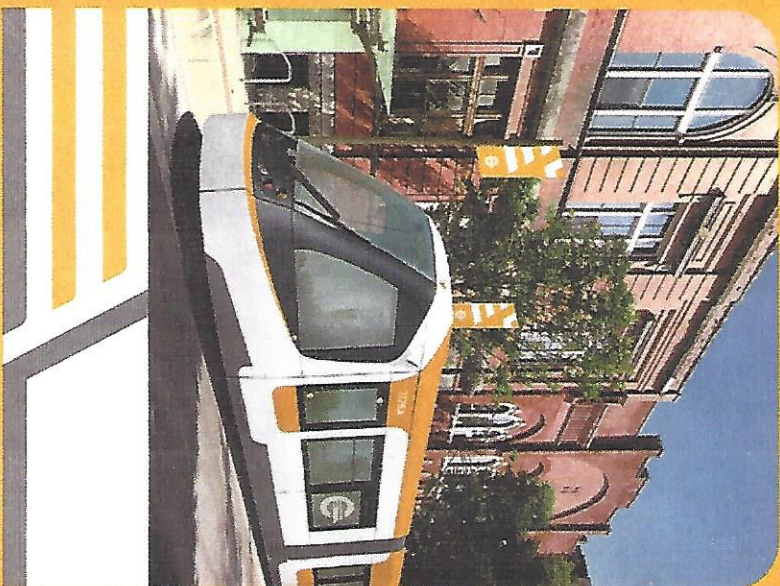


BE SAFE STREETCAR



CINCINNATI
STREETCAR

SAFETY
TIPS

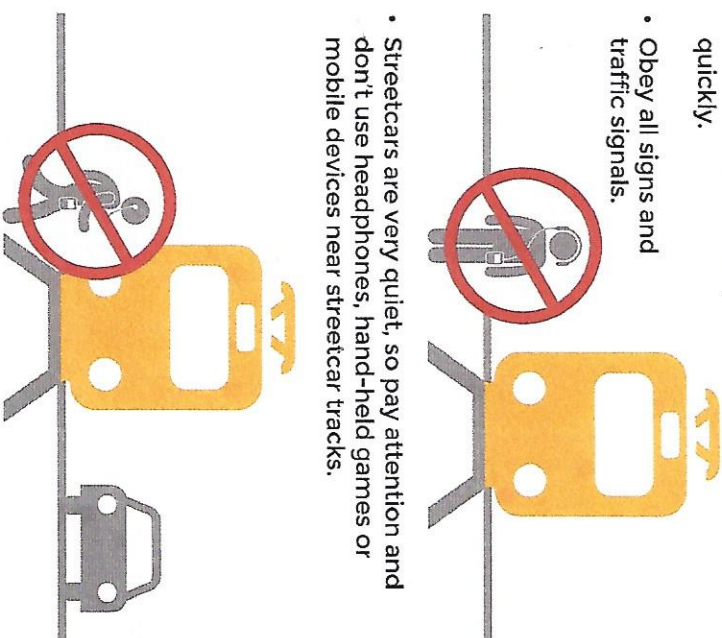


STREETCAR
SAFE

KIDS SAFETY



- Always look both ways before crossing the tracks. Never cross in front of a moving streetcar since streetcars cannot stop quickly.
- Obey all signs and traffic signals.
- Streetcars are very quiet, so pay attention and don't use headphones, hand-held games or mobile devices near streetcar tracks.
- Never cross or run in front of an approaching streetcar or between two stopped vehicles.
- Wait until traffic has stopped before crossing and only cross at designated crosswalks. Just because you see the driver doesn't mean the driver sees you.
- Ride bikes across the tracks at a right angle or in a straight line.



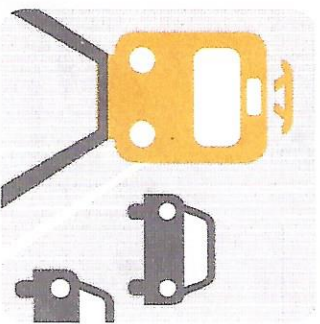
BE STREETCAR SAFE PEDESTRIAN SAFETY

- Look and listen... don't cross in front of a moving streetcar. Streetcars cannot stop quickly.
- Step over tracks; walk your bike or cross at a right angle. Be careful when crossing with strollers, wheelchairs, grocery carts, and things on wheels that could get caught in the track gap.
- Don't walk, run or play along the streetcar tracks.
- Stay clear of the poles, overhead high-voltage electric wires, and power stations.

MOTORIST SAFETY



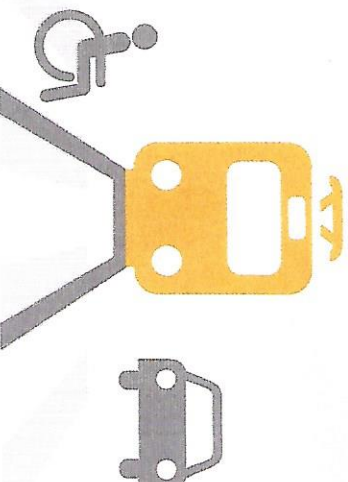
- You can drive on the streetcar tracks, but some streetcar tracks change lanes, so don't follow the tracks.
- Streetcars cannot stop quickly or maneuver out of the way of vehicles and pedestrians, so give them lots of space.
- Based on special signals, the streetcar may move at different times than other traffic.
- Watch for streetcars before turning.



- Park your entire vehicle within the white lines (including mirrors) and look before opening your door.
- Never block the track area.
- Do not drive on tracks in areas marked "streetcar only."

BE STREETCAR SAFE SAFETY FOR PEOPLE WITH DISABILITIES

- Don't cross in front of a moving streetcar. Streetcars cannot stop quickly.
- People using wheelchairs and other mobility devices should cross the tracks at a right angle. Be careful - wheels can get caught in the track gap.



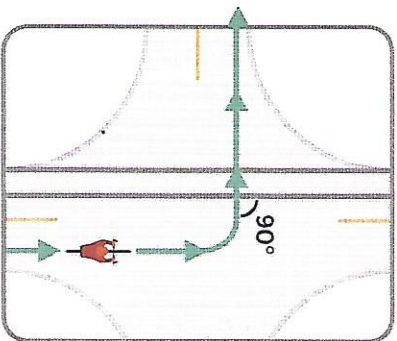
- Stop and look - streetcars are very quiet... cross only at designated crosswalks with signals.

When the streetcar begins operating in September 2016:

- Streetcars offer 100% low-floor boarding (the first in the nation) so everyone, including people using wheelchairs and other mobility devices, can board without a ramp or other assistance.
- Wheelchairs and other mobility devices don't require securement on the streetcar. For your safety, please use the designated area and set your brake.
- Streetcars have designated priority seating for seniors and people with disabilities.

BE SAFE STREETCAR BIKE SAFETY

Streetcars share the road with cyclists, but streetcar tracks can pose some special challenges for bikes and other wheeled vehicles.



- Cross tracks at right angle or in a straight line.
- Be alert and use caution when riding near streetcars and streetcar tracks.
- Be a safe cyclist - always wear a helmet and other protective gear when riding.
- Look and listen... never cross in front of a moving streetcar. Streetcars take longer to stop than other vehicles.
- Use caution - tracks can be slippery when wet.
- Beware of the door zone - watch for motorists opening vehicle doors into your travel space as you pass; don't swerve into the path of other vehicles or the track gap.



- Special signs are posted along the streetcar route to remind cyclists about the track gap, particularly when turning corners onto the streetcar route.

BE SAFE STREETCAR LOOK UP! LOOK OUT!

You must have appropriate permits from the City of Cincinnati, including a Track Access Permit, to do work on any street along the streetcar route.

For information about permits needed along the streetcar route, contact:

DOTe ROW Management Office
801 Plum St., Suite 425, Cincinnati, OH 45202
513-352-3463, Monday to Friday, 8 a.m. to 4 p.m.



Important: This is a high-voltage electrical system.

- Even if you don't see a streetcar, the electric is ON.
- Stay at least 10 feet away from the overhead streetcar wires.
- In case of emergency, call 911 immediately.

You need a track access permit to do any work along the streetcar route such as:

- Deliveries to upper floors of buildings - using lifts, cranes, jacks, other raised-platform equipment
- Chutes or throwing debris out of windows - removing construction debris from upper floors of buildings to dumpsters below
- Scaffolding, ladders, lifts, etc. - washing windows, painting, roofing, other maintenance work
- Wired equipment on upper floors - installing cable or satellite TV, telecommunications, alarm systems, etc.
- Front-loading fork trucks - emptying trash and conservation dumpsters