



# Silver Spring

CAT Meeting #1  
November 6, 2017



# Role of the Meeting Facilitator

- Neutral Party
- Run an orderly, professional and constructive CAT meeting
- Provide CAT opportunity to listen and receive information
- Provide CAT opportunity to ask questions



# Welcome



# Who Does What and Who Is In Charge?

- MTA retains ownership of the Purple Line
- PLTP and its construction branch, PLTC, are constructing the project for MTA
- PLTP and PLTC are carrying out construction in accordance with the P3 Agreement and the Technical provisions
- PLTC will provide Quality Control and Quality Assurance
- MTA is providing review and oversight, including Quality Assurance Oversight, over all PLTC's work
- MTA will monitor PLTC's work to ensure all Technical Provisions and requirements are being met



# How is PLTP's work monitored?

- MTA's Construction Management team includes:
  - Construction Manager
  - Resident Engineers
  - Inspectors
  - Safety Officer
  - Environmental Compliance Manager
- MTA monitors construction activities for compliance with the Agreement, permits and law/regulations
- The Agreement includes specific requirements regarding notifications and worksite conditions (noise, dust, dirt on the roads)
- The Agreement also includes financial incentives and disincentives based on their performance



# Introductions of Key Staff and Stakeholders



# CATs Overview





# What is a CAT?







# Role of the CATs

CATs are intended to:

- Promote two-way information sharing between the Purple Line team and the community
- Offer a forum for residents and other community stakeholders to engage in open-dialogue with the Purple Line team
- Serve as an organized, results-oriented vehicle for identifying and addressing area-specific issues and concerns related to Purple Line construction
- Provide accountability for follow-up actions agreed upon by the Purple Line team and the community



# How Did We Get Here?

- CAT participant groups were identified within 1/3 mile of project alignment
- Chiefly composed of local resident and business groups, some at-large groups also represented
- Each participant group designated one primary representative and one alternate
- Terms “CAT representatives” and “CAT members” are used interchangeably



# CATs Kickoff Meeting

- This first meeting includes both primary and alternate CAT representatives
- CATs binders were provided to help keep meeting notes and materials organized and handy for future meetings
- Subsequent meetings can focus in on specific topics of interest



# Meeting Structure

- Meeting agendas will be organized by the Purple Line team based on project schedule and community input
- Meetings will generally have four main components
  - Action Items from Previous Meeting
  - Project and Construction Updates from Purple Line Team
  - Updates and feedback from CAT representatives
  - Questions and comments from the public
- All presentation materials will be made available via [www.purplelinemd.com](http://www.purplelinemd.com)
- CATs will meet regularly; individual meeting schedules will vary by CAT



# Role of the Meeting Facilitator

- Neutral Party
- Run an orderly, professional and constructive CAT meeting
- Provide CAT opportunity to listen and receive information
- Provide CAT opportunity to ask questions





# Ground Rules for a Successful Meeting

- Everyone is treated courteously and with respect – no rude comments please
- Take turns, talk one at a time, and limit side conversations
- Everyone should feel welcome to participate
- Differing opinions are welcome
- Start on time; respect everyone's time
- General public may attend the CAT meetings and can offer questions or comments during the last 15 minutes of every meeting.
- Weather-related cancellations will be based on the respective county school schedule or at the discretion of the MTA.

## Silver Spring

Spring Street to Wayne Avenue to Manchester Place Station

**Presented by:**

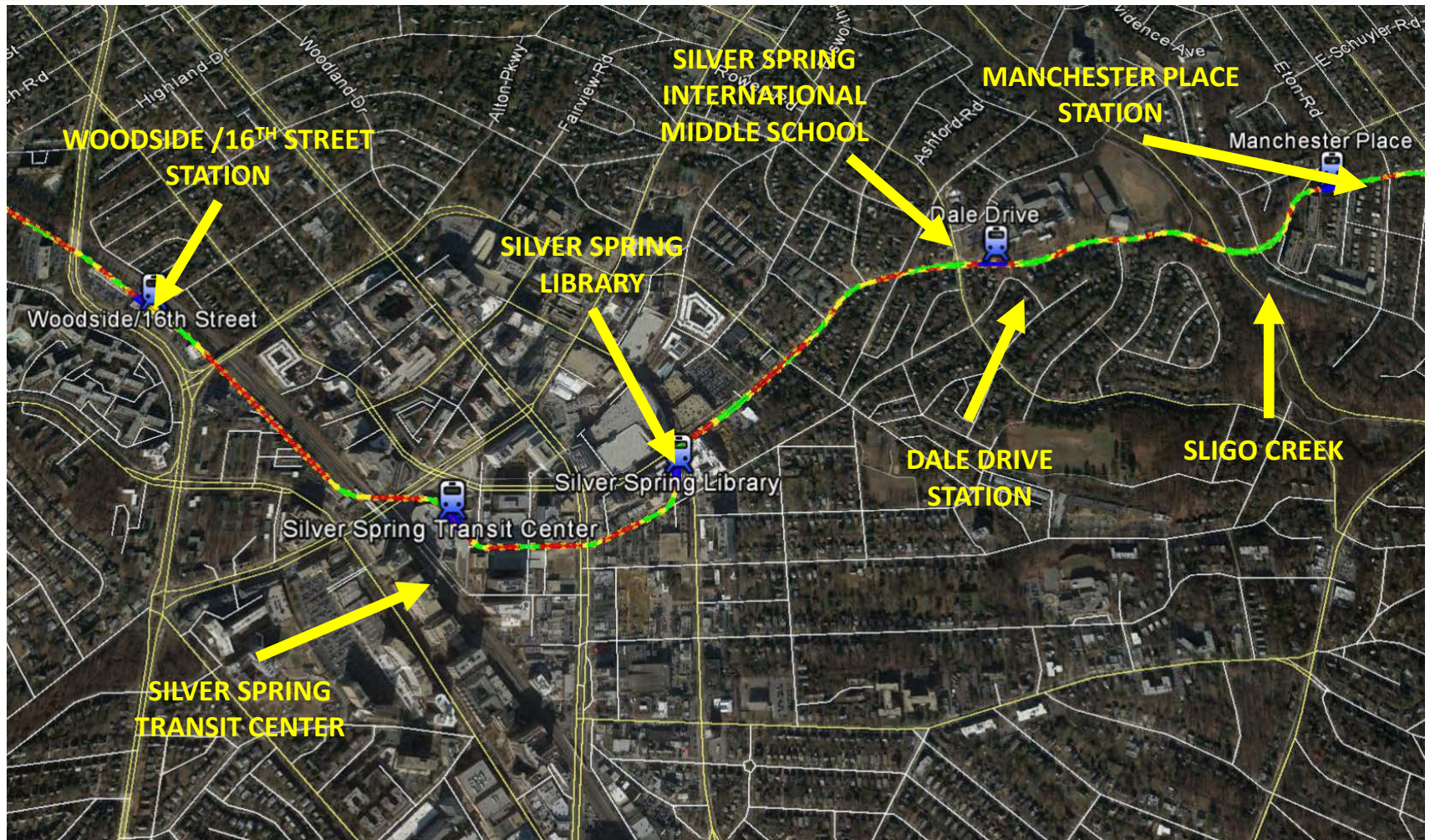
**Jim Jewell– PLTC Area 1 Manager**

## OUTLINE

- Project overview
- Construction update
- 6-Month look ahead
- Project schedule

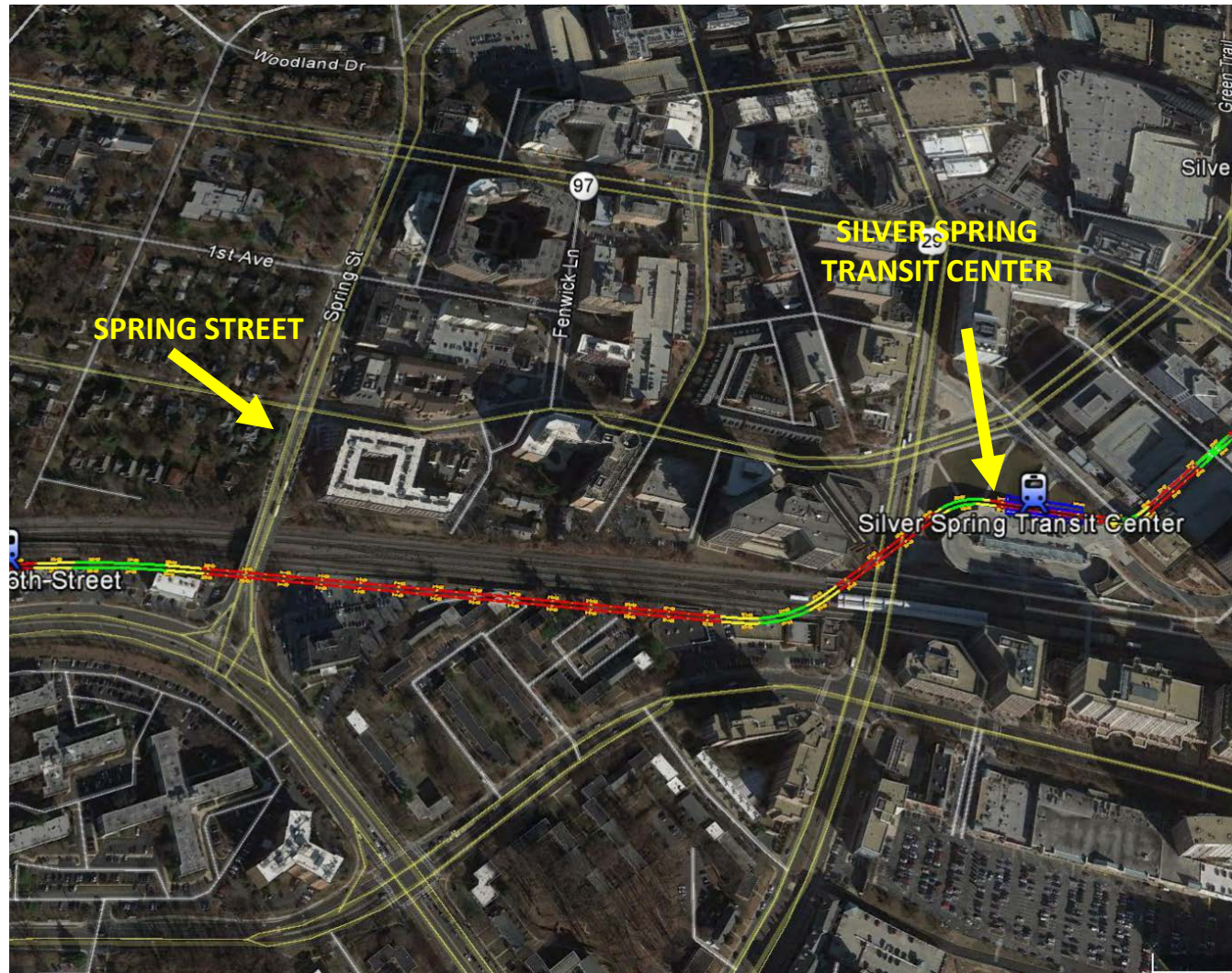


# SILVER SPRING





# SILVER SPRING



## SILVER SPRING TRANSIT CENTER

Close Spring Street for  
6 months

Access at SSTC is  
through local streets  
and Colesville Road

13 Weekend Full Lane  
closures on Colesville  
Road for LRT and CCT  
Bridge Installation



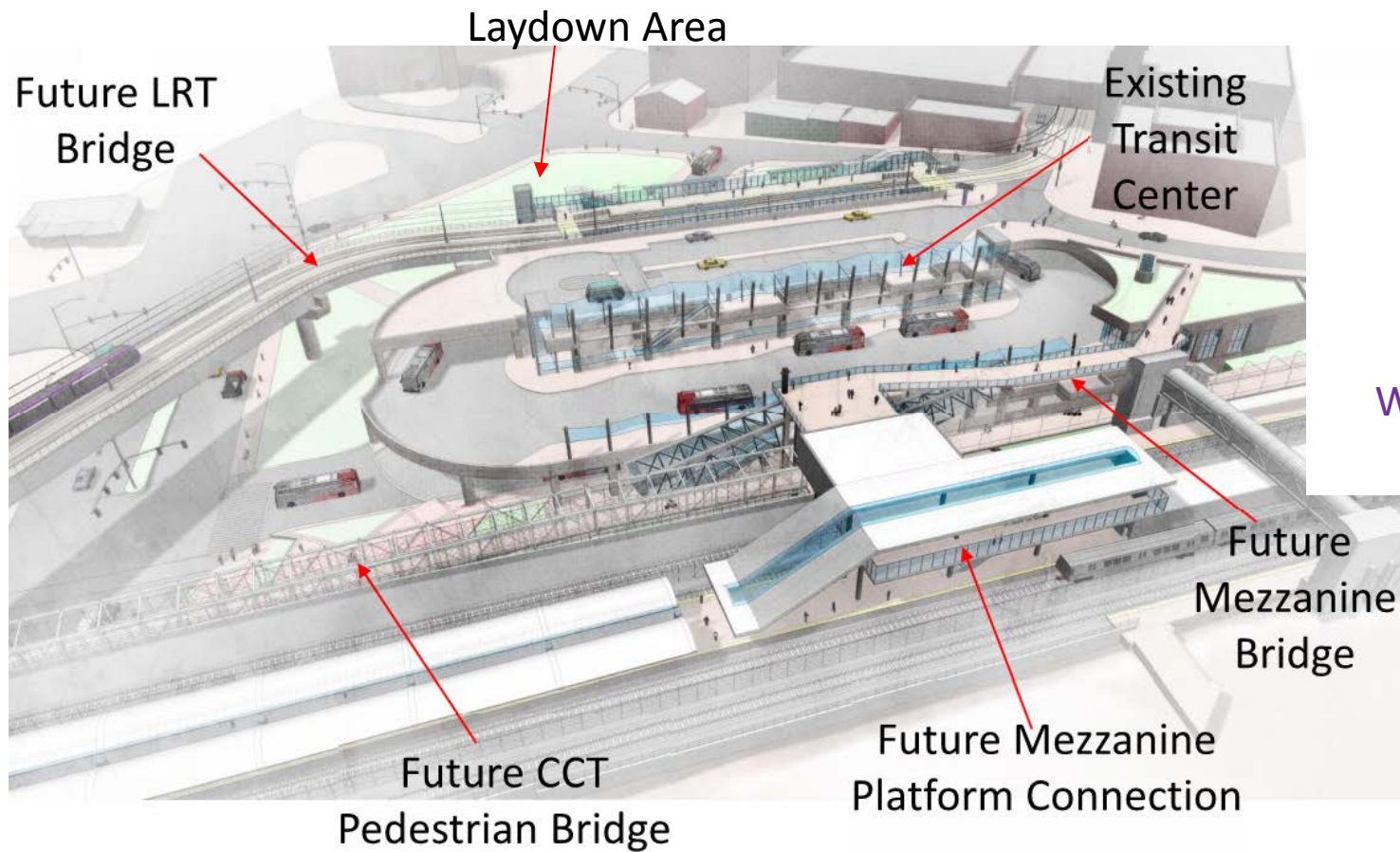
# SILVER SPRING



## SILVER SPRING TRANSIT CENTER

### Scope includes:

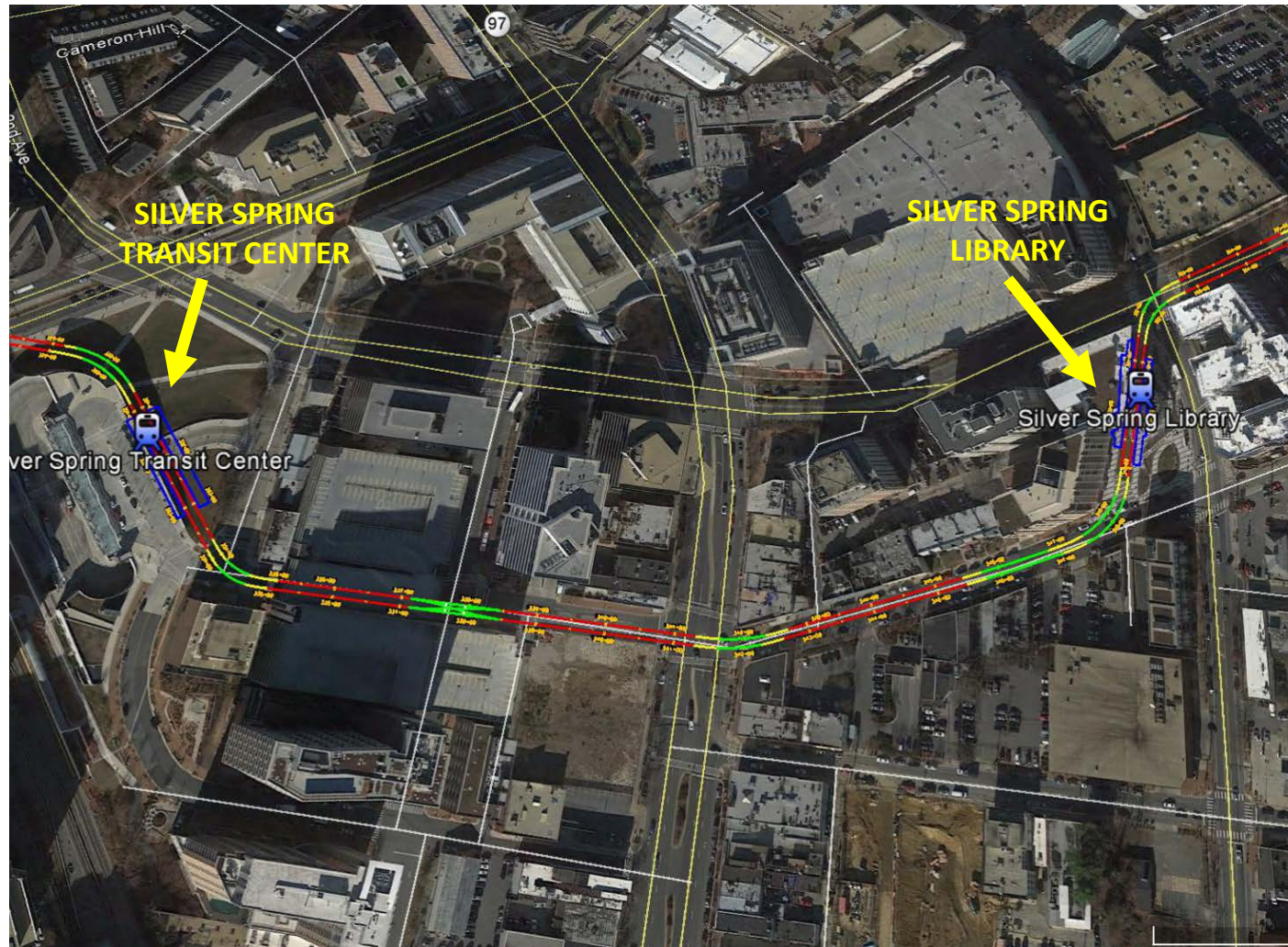
- Demolition of several commercial buildings, and part of existing SSTC for mezzanine
- Construction of new LRT and CCT bridges
- New Station at Silver Spring
- Retaining Walls
- Drainage/utilities



**SSTC Features:**  
LRT Aerial Bridge  
CCT Pedestrian  
Bridge  
WMATA Mezzanine  
SSTC Station



# SILVER SPRING



## SILVER SPRING

Bonifant Street will be in a total shutdown west of Georgia Avenue. 1 Lane EB east of Georgia shall be maintained at all times.

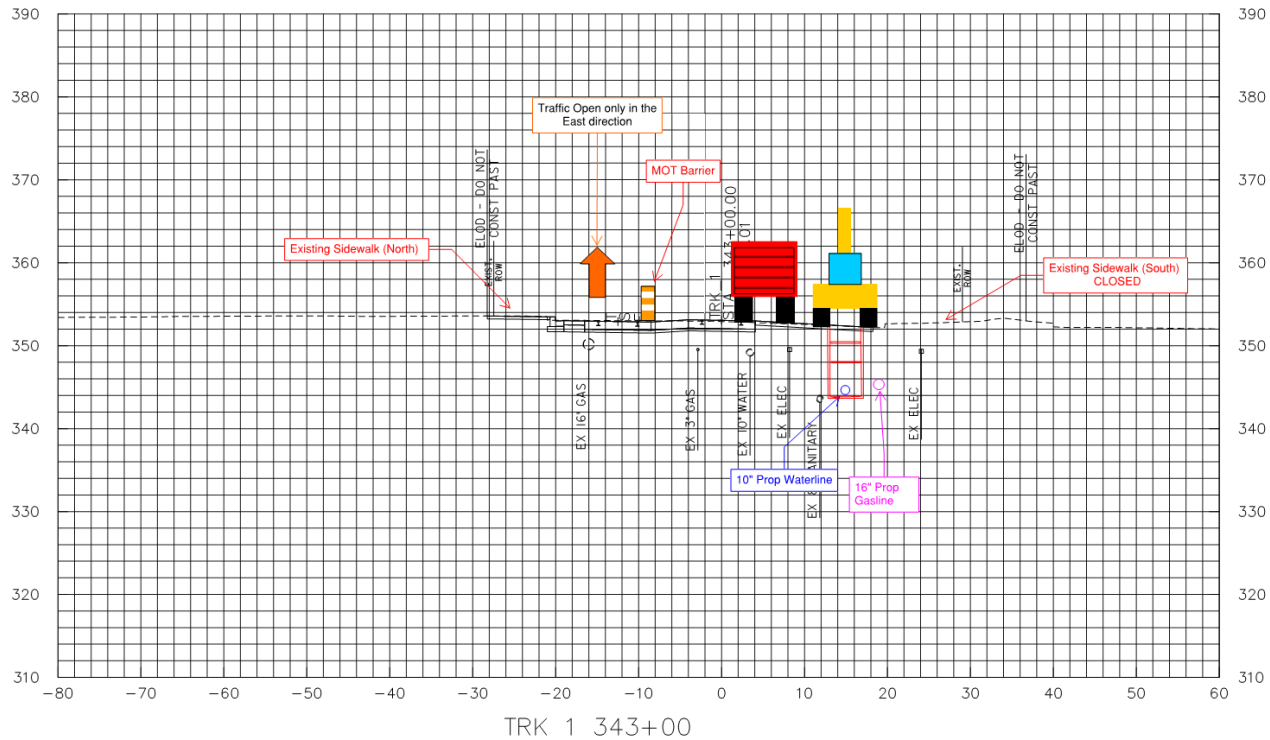
Pedestrian access shall be maintained during construction.

Construction in Georgia will be done in 2 phases. Traffic will be limited to 2 lanes each way while work is going on.

# BONIFANT STREET

## Phase I

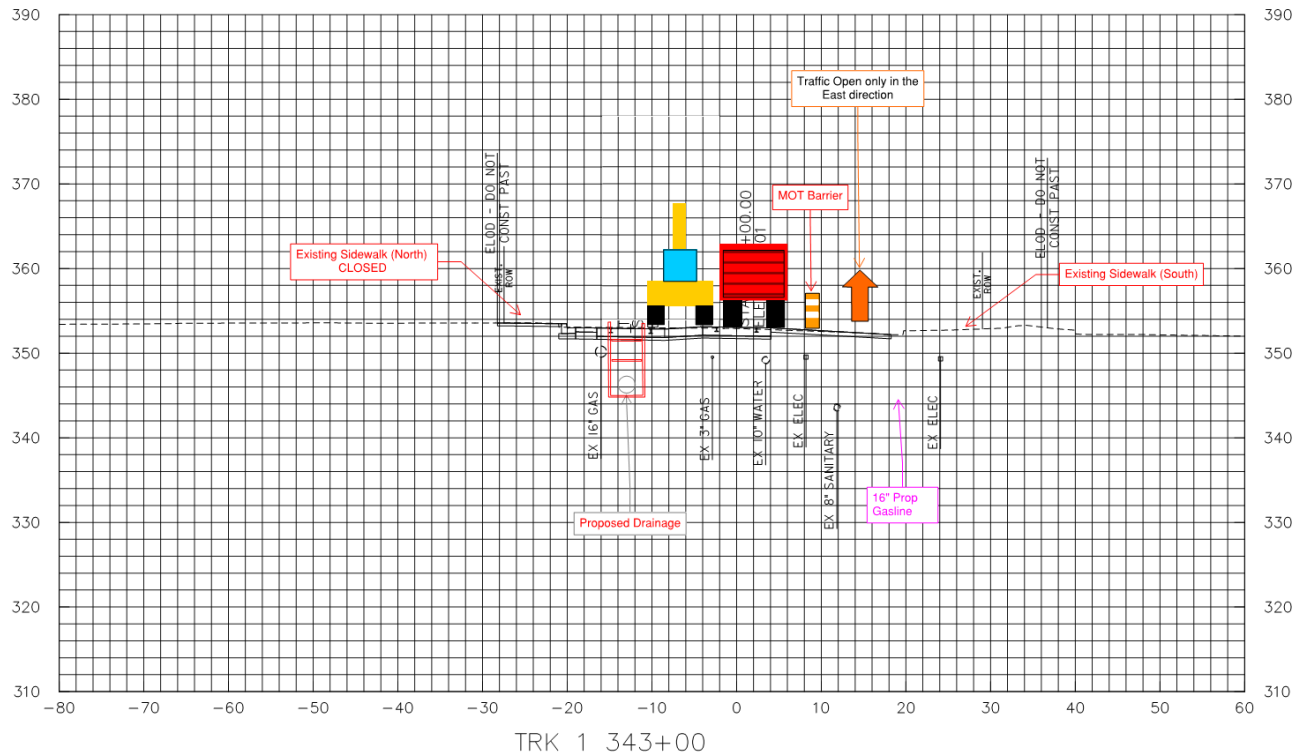
### Typical Water line Installation - Bonifant East



# BONIFANT STREET

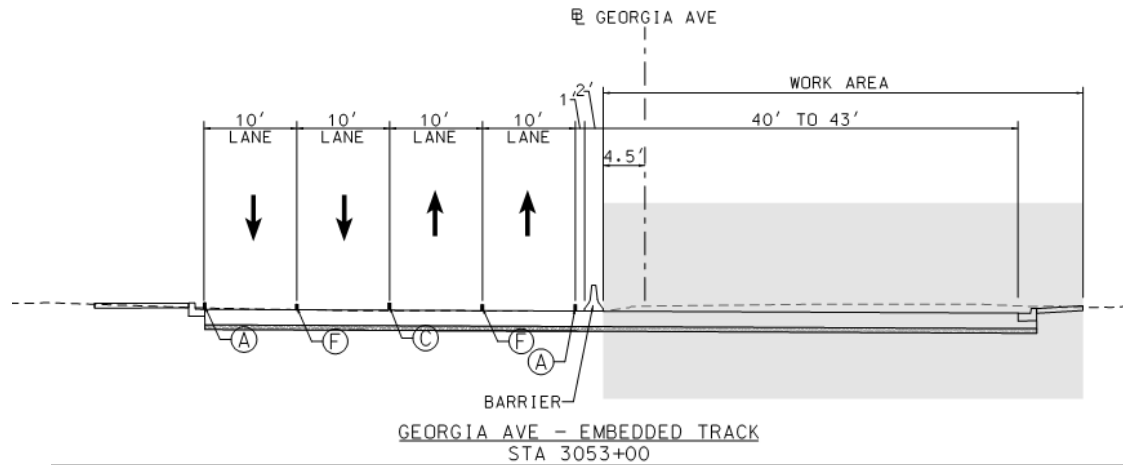
## Phase II

### Typical Drainage Installation - Bonifant East

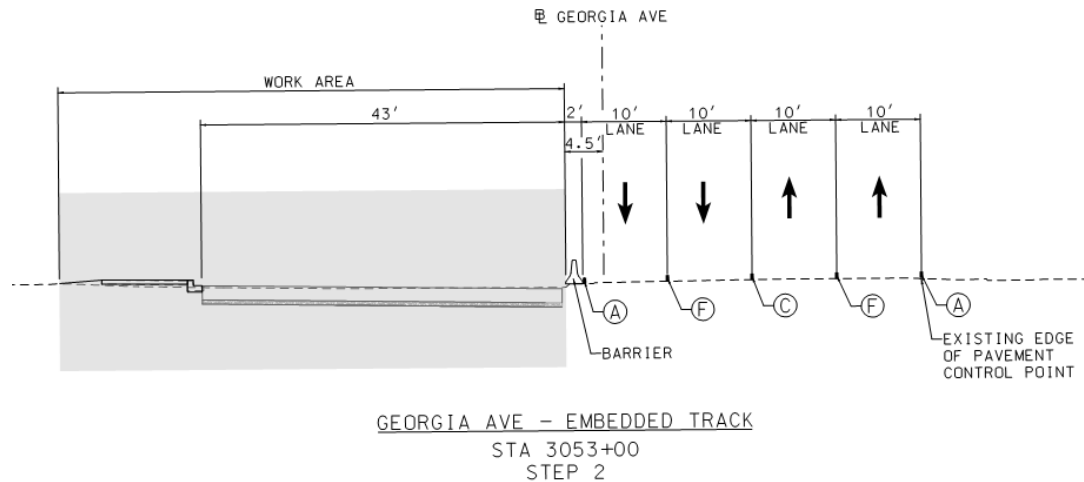




## Step 1

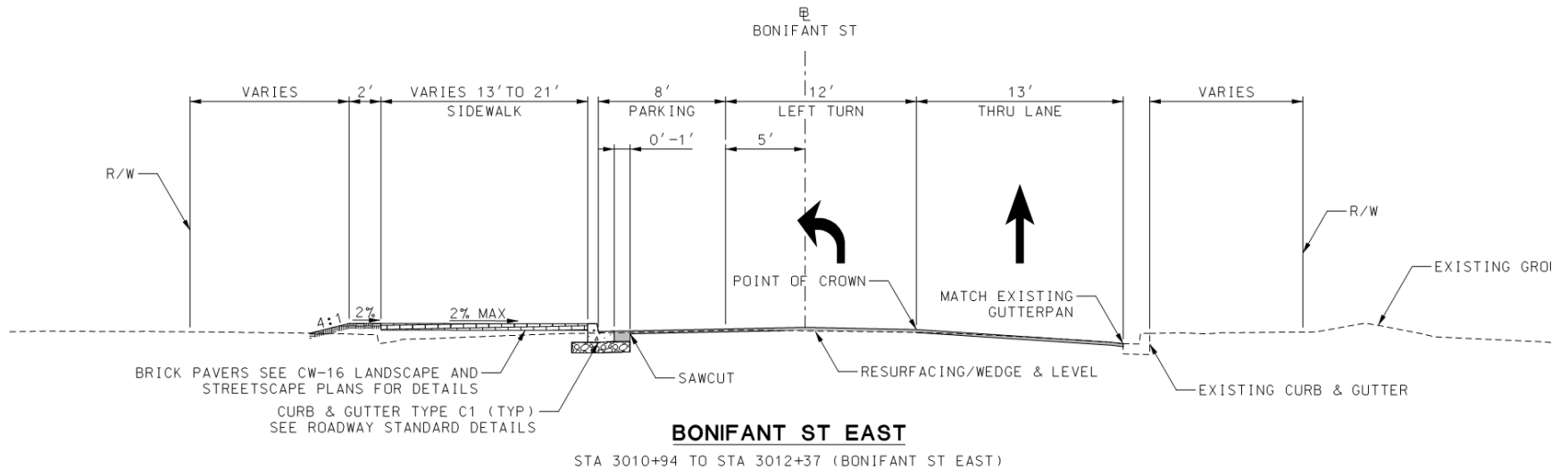


## Step 2

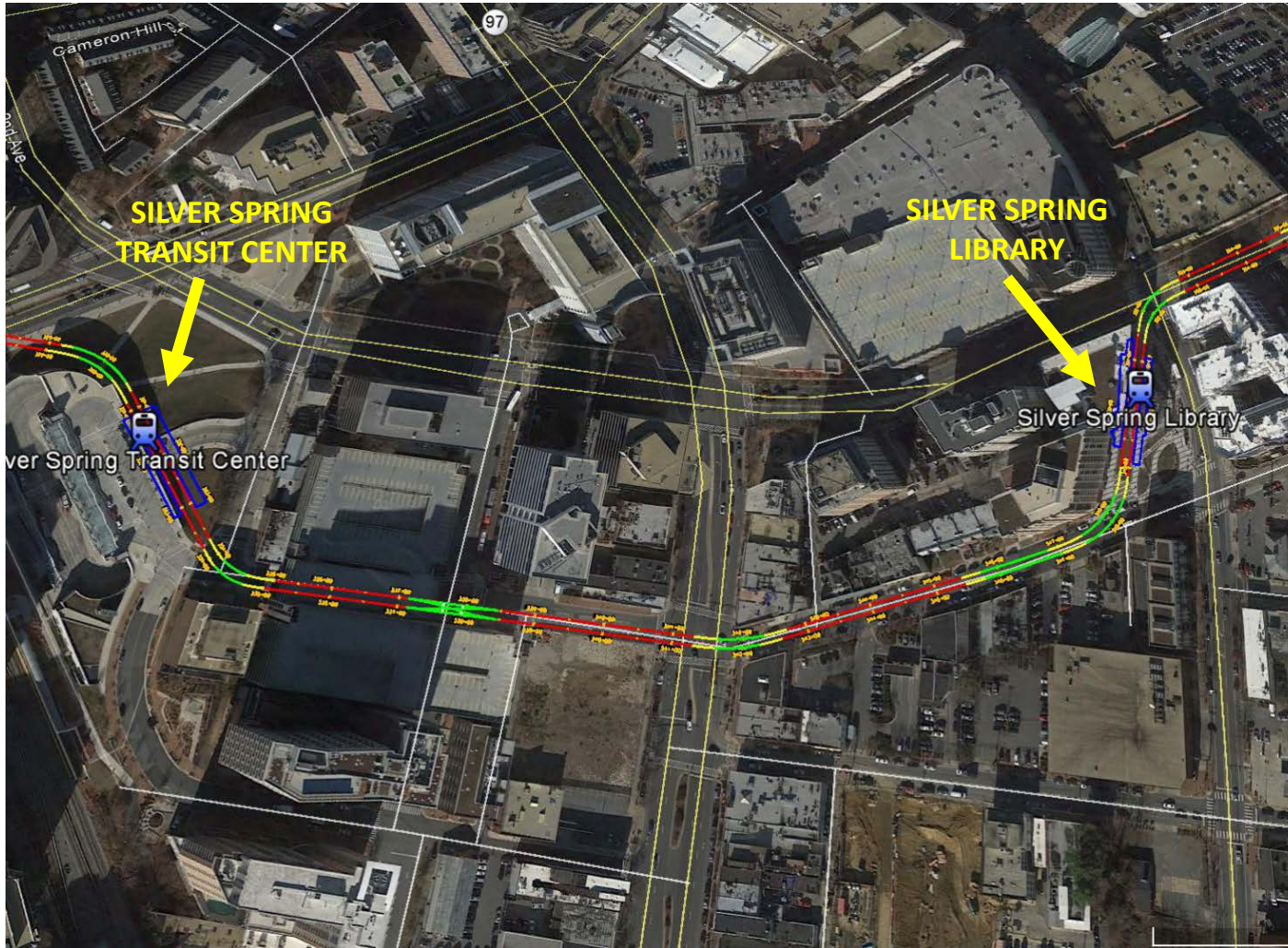


# BONIFANT STREET

## Final Configuration



# SILVER SPRING



## SILVER SPRING

### Scope includes:

- New station at Silver Spring Library
- New sidewalks/curb
- Paving
- Drainage/utilities
- Track and systems installation



# SILVER SPRING

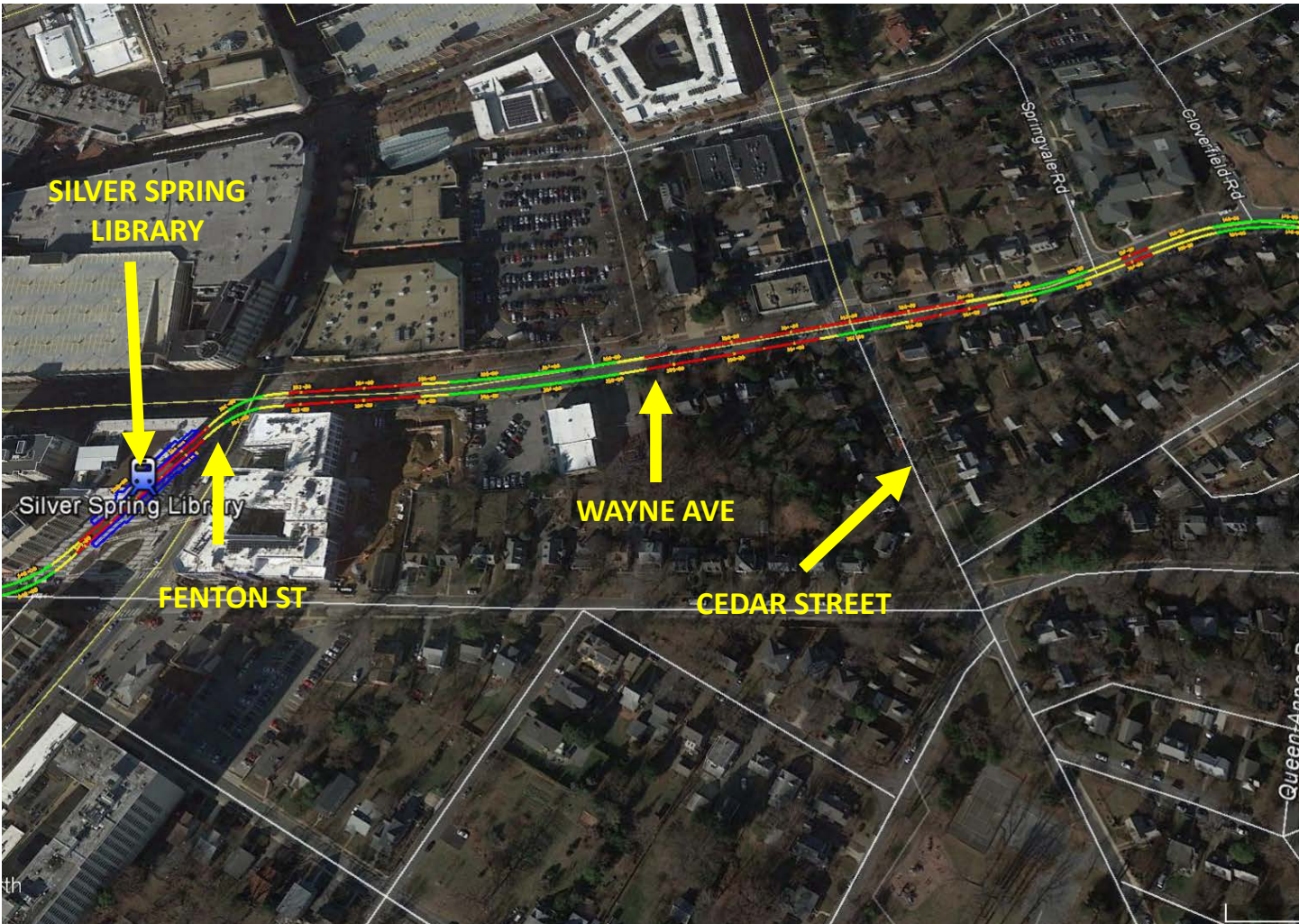
## Wayne Avenue

Long term lane closures during all of construction. Traffic will be limited to one lane each way.

Parking will not be permitted from Fenton to Manchester during Construction.

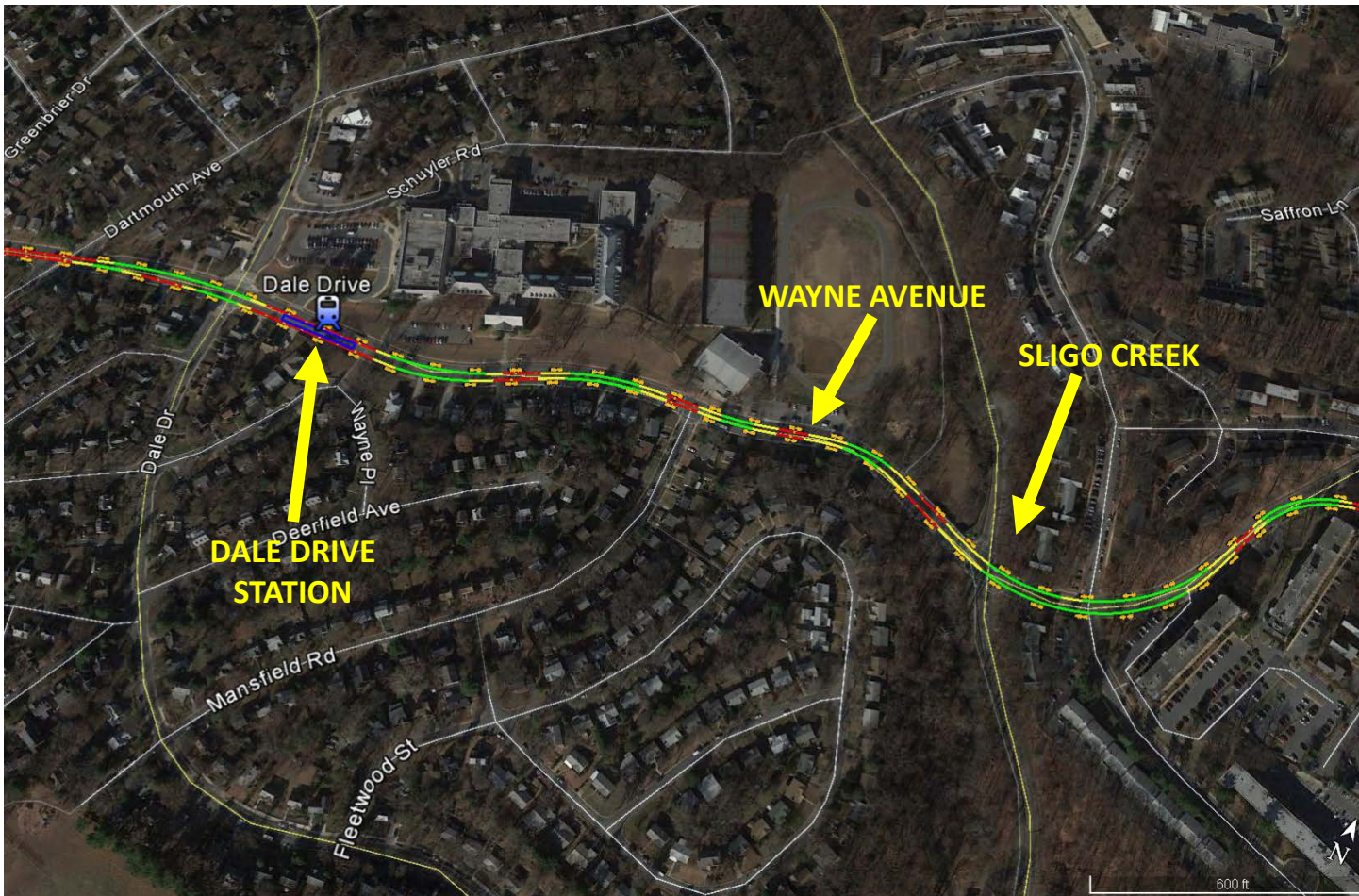
The intersection of Fenton St and Wayne Avenue will be completely shut down for track installation.

For utility installation, localized lane closures may limit traffic to one lane, with flaggers. This kind of operation will be limited to night shifts.





# SILVER SPRING



## DALE DRIVE STATION

Long term lane closures during all of construction. Traffic will be limited to one lane each way.

Parking will not be permitted from Fenton to Manchester during Construction.

Fenton Street, Cedar Street and Dale Drive

1 lane EW M-F 9am – 3:30pm

1 lane EW S-Th 7pm – 7am

1 lane EW Fri-Sun - 7pm to 7pm

Complete reconstruction of Silver Spring International Middle School parking lots to happen during the summers of 2018 and 2019



# SILVER SPRING

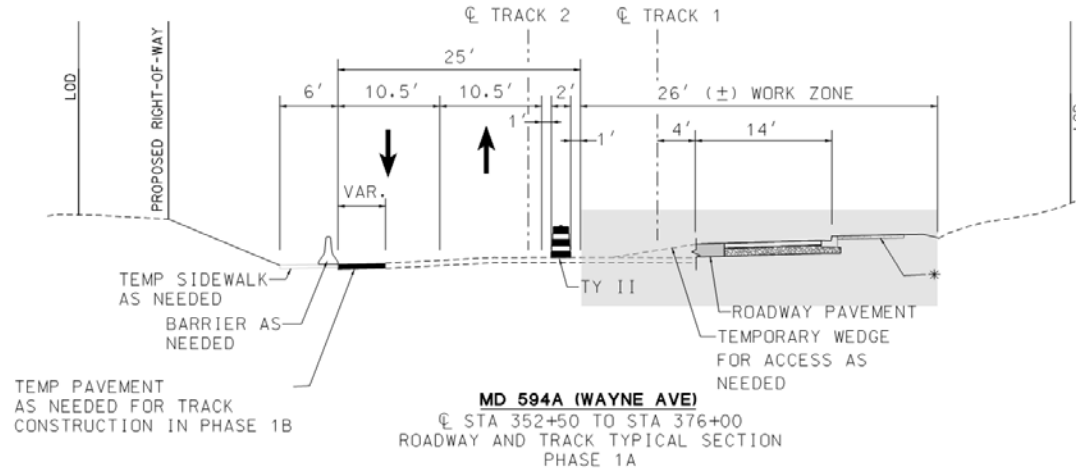
## DALE DRIVE STATION

### Scope includes:

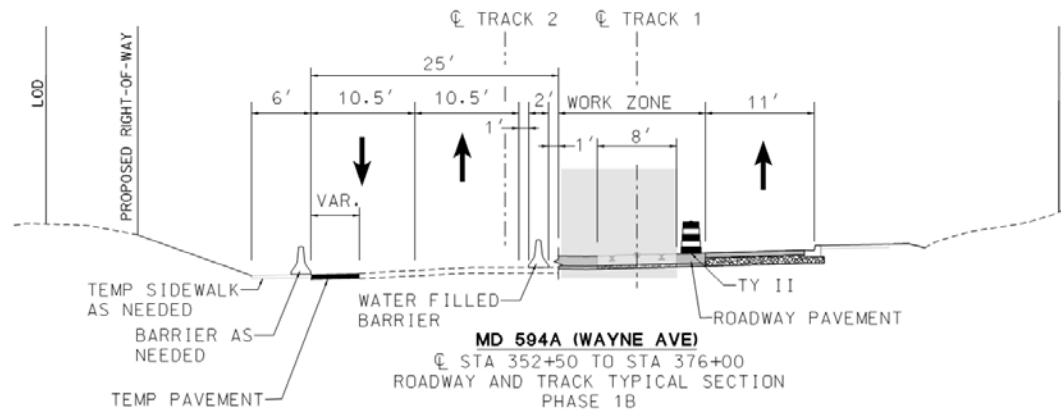
- New station at Dale Drive
- Reconstruct parking lots at International School
- Reconstruction of Sligo Creek Bridge
- Drainage/utilities
- Trackwork
- Systems
- TPSS Station at SSIMS



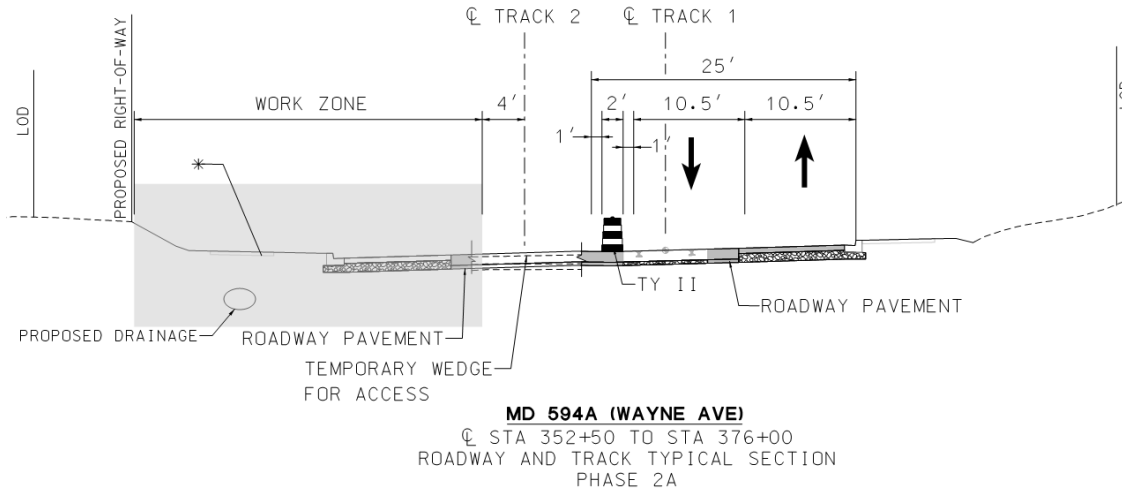
## Phase 1A



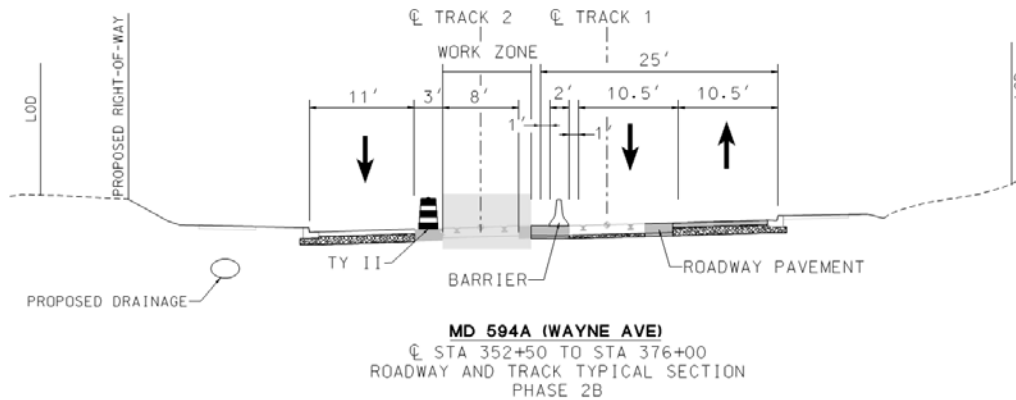
## Phase 1B



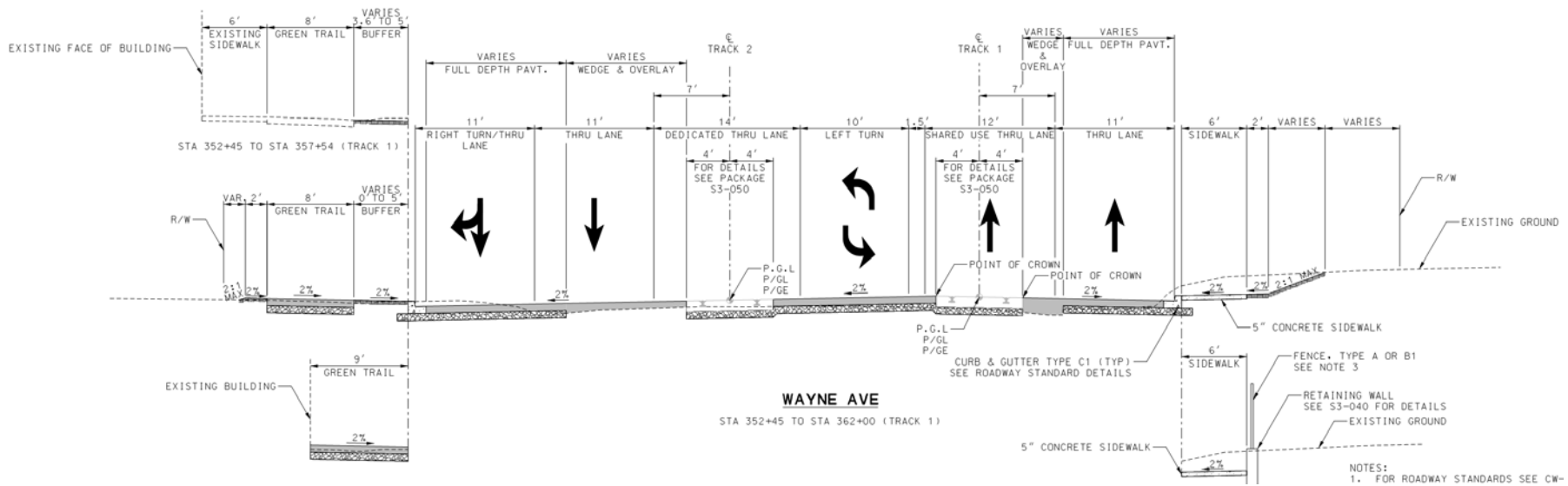
## Phase 2A



## Phase 2B



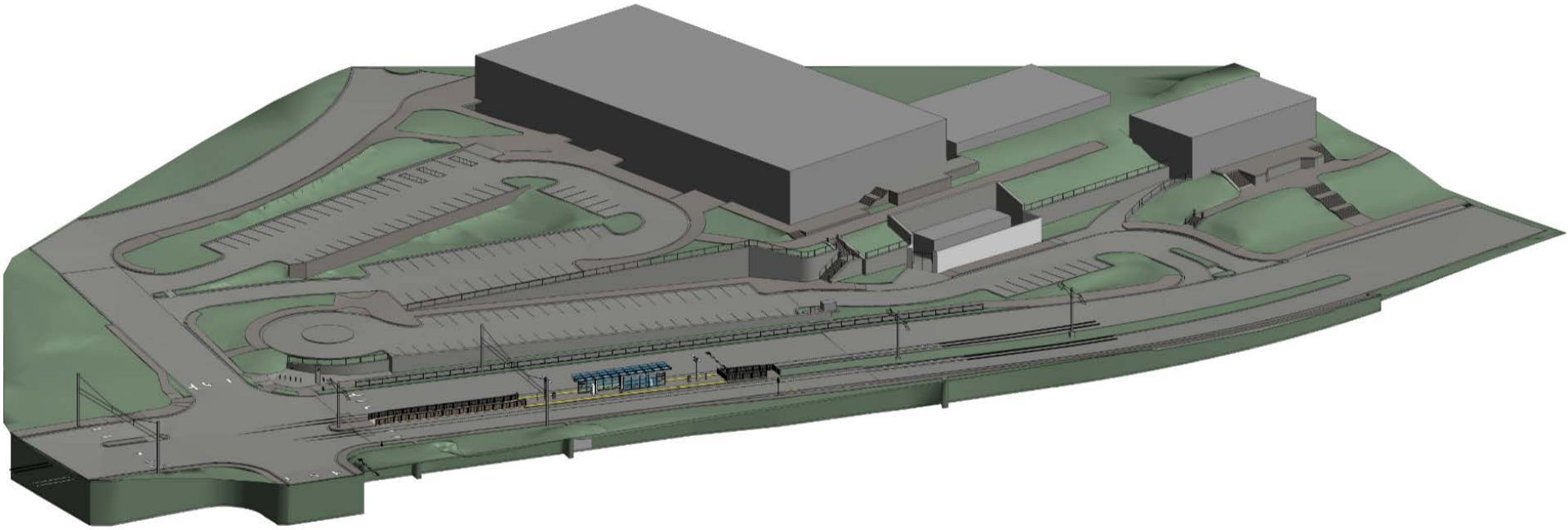
## Final Configuration





# SILVER SPRING INTERNATIONAL MIDDLE SCHOOL





Upper Parking Lot – Summer 2018 & 2019

Middle Parking Lot – Summer 2018-Fall 2018

Lower Parking Lot – Summer 2018 & 2019

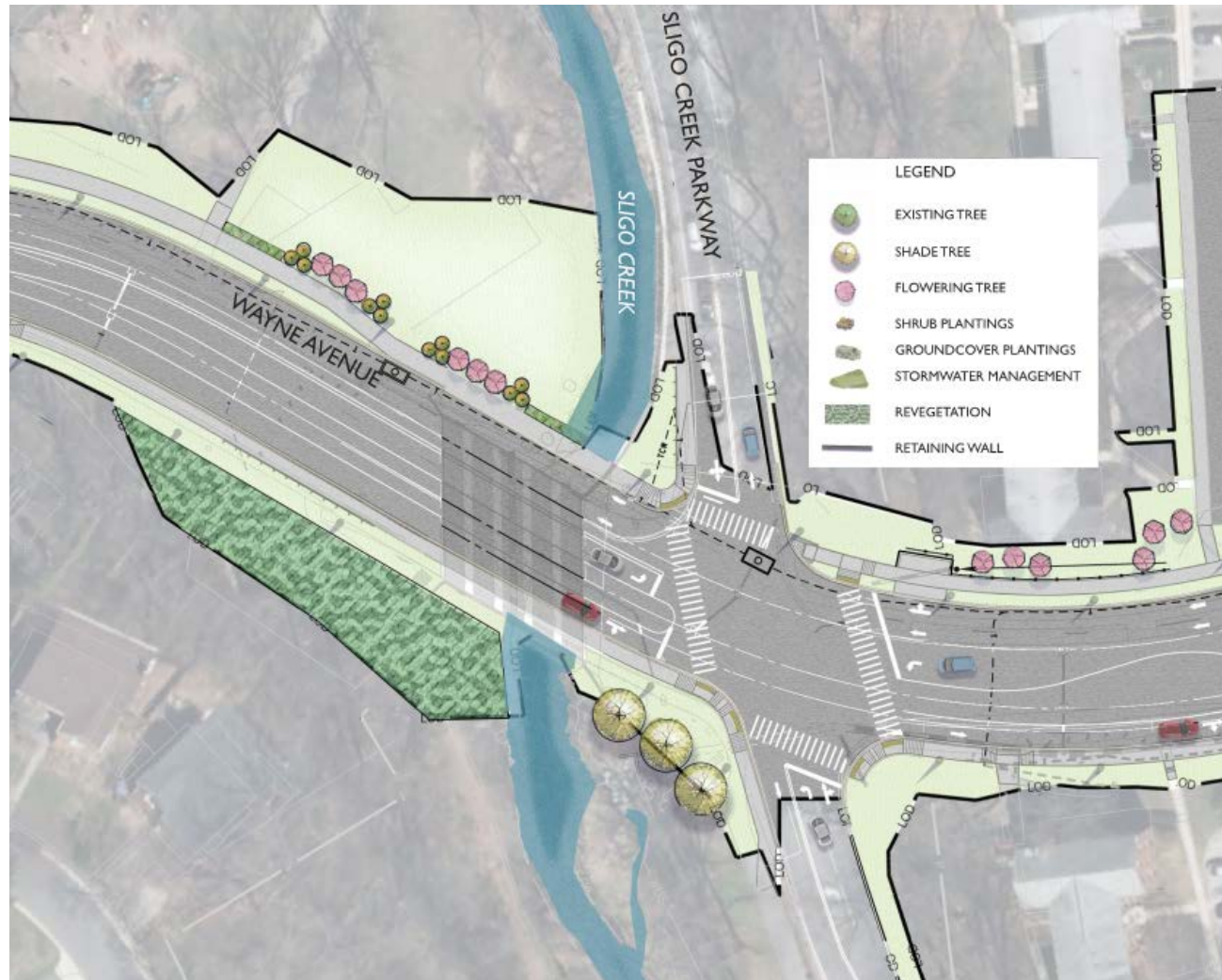


# SLIGO CREEK BRIDGE

## Sligo Creek Bridge

### Scope includes:

- Phased Bridge Construction
- Stream Restoration
- Drainage/utilities



## COMMENCEMENT OF CONSTRUCTION

Ground Breaking - August 28, 2017

Began in Bethesda with:

- Site protection
- Tree removal
- Demolition
- Establishing construction offices



36



## PRE-CONSTRUCTION – SILVER SPRING

### Early Work

- Surveying
- Utility investigations
- Geotechnical investigations
- Environmental Reviews
- Design/engineering

## CONSTRUCTION WORK HOURS

- Standard Calendar is 40 hours / week
- Make up / Maintenance day will be Saturday
- Normal Day Shift 7:00 AM – 5 PM (Flexible based on work zone)
- Normal Night Shift 8:00 PM – 4:30 AM (Will follow lane closure periods)

## 6-MONTH LOOK AHEAD- SILVER SPRING

- SSTC:
  - WMATA Reviews
  - Begin relocating utilities, drainage, establishing access
- Bonifant:
  - Setup MOT Closures
  - Utility relocations
- SSIMS:
  - Utility relocation, Drainage, Construction Entrances
- Wayne Avenue:
  - Setup MOT closures, Utility Relocations,
  - Sligo Creek Bridge partial demo

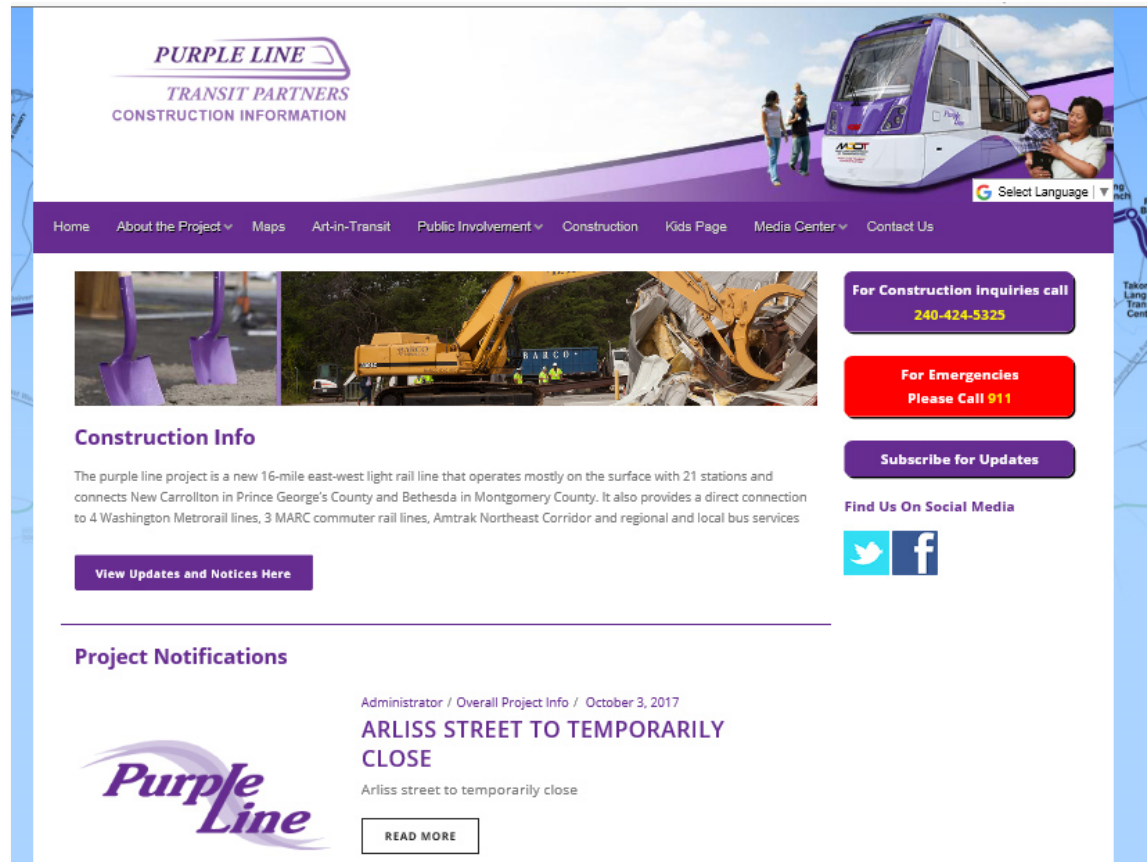
## OVERALL PROJECT SCHEDULE

- SSTC- Spring 2018- Spring 2021
- SSIMS- Spring 2018 – Fall 2019
- Future Capital Crescent Trail - Winter 2017 – 2021
- Utility Relocation - Winter 2017 – Spring 2019
- Walls - Spring 2018 – Winter 2019
- Paving - Fall 2019 – Fall 2020
- Tracks - Fall 2020 – Winter 2020
- Train Communication - Winter 2020 – Summer 2021
- Testing/Commissioning – Summer 2021 – Winter 2021
- **Purple Line Operations Begin – Spring 2022**



New Construction  
information portal:

[WWW.PURPLELINE  
MD.COM/  
CONSTRUCTION/](http://WWW.PURPLELINE<br/>MD.COM/<br/>CONSTRUCTION/)



**PURPLE LINE**  
TRANSIT PARTNERS  
CONSTRUCTION INFORMATION

Home About the Project Maps Art-in-Transit Public Involvement Construction Kids Page Media Center Contact Us

Select Language

**For Construction Inquiries call**  
240-424-5325

**For Emergencies**  
Please Call 911

**Subscribe for Updates**

**Find Us On Social Media**

Twitter Facebook

**Construction Info**

The purple line project is a new 16-mile east-west light rail line that operates mostly on the surface with 21 stations and connects New Carrollton in Prince George's County and Bethesda in Montgomery County. It also provides a direct connection to 4 Washington Metrorail lines, 3 MARC commuter rail lines, Amtrak Northeast Corridor and regional and local bus services

[View Updates and Notices Here](#)

**Project Notifications**

Administrator / Overall Project Info / October 3, 2017

**ARLISS STREET TO TEMPORARILY CLOSE**

Arliss street to temporarily close

[READ MORE](#)

**Purple Line**

New Construction  
information portal

Sign up for updates

**PURPLE LINE**  
TRANSIT PARTNERS  
CONSTRUCTION INFORMATION

Home About the Project Maps Art-in-Transit Public Involvement Construction Kids Page Media Center Contact Us

Select Language

**For Construction Inquiries call**  
240-424-5325

**For Emergencies**  
Please Call 911

**Subscribe for Updates**

**Find Us On Social Media**

Twitter Facebook

**Construction Info**

The purple line project is a new 16-mile east-west light rail line that operates mostly on the surface with 21 stations and connects New Carrollton in Prince George's County and Bethesda in Montgomery County. It also provides a direct connection to 4 Washington Metrorail lines, 3 MARC commuter rail lines, Amtrak Northeast Corridor and regional and local bus services

[View Updates and Notices Here](#)

**Project Notifications**

Administrator / Overall Project Info / October 3, 2017

**ARLISS STREET TO TEMPORARILY CLOSE**

Arliss street to temporarily close

[READ MORE](#) 42

## New Construction information portal

Sign up for updates

**Remember to select the  
area where you live or work  
for specific information  
sent to your email.**

The screenshot shows the 'PURPLE LINE TRANSIT PARTNERS CONSTRUCTION INFORMATION' website. The header includes a navigation menu with links: Home, About the Project, Maps, Art-in-Transit, Public Involvement, Construction, Kids Page, Media Center, and Contact Us. A banner image shows a purple and white train with people. Below the header, a message states: 'The update subscription form is loaded by javascript. If you are having trouble viewing the form, please be sure javascript is enabled and is not being blocked by third-party software.'

The main form area contains the following fields and sections:

- First Name \***: Text input field with placeholder 'Enter first name.'
- Last Name \***: Text input field with placeholder 'Enter last name.'
- Address \***: Text input field with placeholder 'Enter address here.'
- Town \***: Text input field with placeholder 'Enter town here.'
- County \***: Text input field with placeholder 'Enter county here.'
- Phone Number \***: Text input field with placeholder 'Enter phone number.'
- Email \***: Text input field with placeholder 'Enter your email.'
- How would you prefer to receive updates? If you select text please be sure to enter your mobile phone number. \***: A dropdown menu with 'Email' selected.
- Neighborhood Selections**: A list of checkboxes for various areas:
  - ☐ Bethesda/Chevy Chase: Bethesda to Rock Creek Park
  - ☐ Greater Lyttonsville/Woodside: Rock Creek Park to Woodside Station
  - ☐ Silver Spring: Spring Street to Wayne Avenue to Manchester Place Station
  - ☐ Long Branch: Manchester Towers to Carroll Avenue
  - ☐ University Boulevard: Carroll Avenue to Adelphi Road
  - ☐ College Park/M Square: Adelphi Road to River Road/Kenilworth Avenue
  - ☐ Riverdale Park: Kenilworth Avenue/Riverdale Road, to Beacon Heights Station
  - ☐ Glenridge/New Carrollton: Veterans Parkway, Elin Road to New Carrollton
- Subscribe**: A purple button at the bottom of the form.

At the bottom right, it says 'powered by theMunch'.



E-mail messages

Notifications and project information will be periodically sent via email.



**Purple Line** **CONSTRUCTION UPDATE**

**FOR IMMEDIATE RELEASE: OCTOBER 12, 2017**

**WORK BEGINS ON THE PURPLE LINE PROJECT**

THANK YOU FOR YOUR INTEREST IN THE PURPLE LINE PROJECT. AFTER MANY MONTHS OF PLANNING AND DESIGN, THE PROJECT HAS BEGUN CONSTRUCTION. THIS WORK INCLUDES THE REMOVAL OF TREES AND UNDERBRUSH, ESTABLISHING FENCES AND ENVIRONMENTAL PROTECTION ALONG THE WORK ZONE. UTILITY INVESTIGATIONS WILL ALSO BE TAKING PLACE AT MANY LOCATIONS ALONG THE CORRIDOR.

WORK HAS BEGUN AT THE BETHESDA STATION LOCATED ON ELM STREET IN BETHESDA. THIS STATION WILL EVENTUALLY PROVIDE A CONNECTION TO WASHINGTON METROPOLITAN AREA TRANSIT AUTHORITY (WMATA). THIS OPERATION WILL CONTINUE FOR SEVERAL YEARS.

THE GEORGETOWN BRANCH INTERIM TRAIL IS CLOSED UNTIL THE NEW TRAIL OPENS IN 2022. THE CORRIDOR IS AN ACTIVE CONSTRUCTION ZONE, AND SECURITY OF THE SITE WILL BE ENFORCED. IT IS IMPORTANT THAT PEOPLE REFRAIN FROM ENTERING THE SITE FOR THEIR SAFETY.

ARLISS STREET IN SILVER SPRING BETWEEN FLOWER AND WALDON ROAD IS SCHEDULED TO BE TEMPORARILY CLOSED TO ALLOW THE CONSTRUCTION OF THE EAST SIDE OF THE PLYMOUTH TUNNEL. THIS SITE, ADJACENT TO THE GIANT FOOD STORE, WILL HAVE A FENCED CONSTRUCTION YARD. ACCESS TO THE ARLISS KNOWLES TOWNHOUSES WILL BE MAINTAINED.

PLYMOUTH STREET WILL ALSO BE TEMPORARILY CLOSED DURING THE CONSTRUCTION OF THE WEST SIDE OF THE TUNNEL AND MANCHESTER STATION.

ALL ACTIVITIES ARE SUBJECT TO CHANGE DUE TO TRAFFIC, WEATHER OR EMERGENCY SITUATIONS.

**PURPLE LINE**  
TRANSIT PARTNERS

PURPLELINEMD.COM   OUTREACH@PLTCLLC.COM   HOTLINE: 240-424-5325

## Public Outreach

- Sign up for construction notices @ [Purplelinemd.com](http://Purplelinemd.com)
- For construction related questions and concerns contact PLTP at [outreach@pltdllc.com](mailto:outreach@pltdllc.com)
- Or call the 24/7 Hotline—240-424-5325
- For general project questions and comments please contact MTA public outreach at [outreach@purplelinemd.com](mailto:outreach@purplelinemd.com)
- Or call 443-451-3706 (Español) 443-451-3705



# Questions and Comments



# Closing Remarks